



PROTECTION AND CONNECTION

ONE20

Enclosed switches for residential and commercial installations

It's the only enclosed switch you'll ever need. It's as simple as that.



— Fully water-resistant enclosure (IP67)



— UV- and ageing-resistant material



— Suitable for all temperature and weather conditions



— Airtight enclosure keeps dirt and dust out



— Safety lockout

Reliable performance in all indoor and outdoor environment

Durable and water-resistant (IP67) enclosure, UV resistant material and tested at a temperature of -30°C

Won't break

Built-in feature to stop mechanical breakage

Factory tested and approved

Each individual switch has been factory tested before shipping

Quick and reliable installation

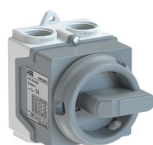
Simple and smart construction and compression glands (included)



Ordering information



ONE20M_W



ONE20M_G



ONE20M_Y

Protection degree IP67. Compression glands included in the delivery.					
Number of poles	Enclosure size [mm]:			Type	Order code
	H	W	D		
Cover color: white. Handle color: white.					
2	92	65	84	ONE20M2W	1SCA138456R1001
3	92	65	84	ONE20M3W	1SCA138457R1001
4	92	65	84	ONE20M4W	1SCA138459R1001
Cover color: grey. Handle color: grey.					
2	95	65	84	ONE20M2G	1SCA135532R1001
3	92	65	84	ONE20M3G	1SCA135535R1001
4	92	65	84	ONE20M4G	1SCA135538R1001
Cover color: yellow. Handle color: red.					
2	92	65	84	ONE20M2Y	1SCA135533R1001
3	92	65	84	ONE20M3Y	1SCA135536R1001
4	92	65	84	ONE20M4Y	1SCA135540R1001

ONE202GB 17-08, 1SCC340003B0201

Technical data

Data according to IEC 60947-3			ONE20M2_	ONE20M3_	ONE20M4_
Impulse withstand voltage, U _{imp}		kV	6	6	6
Operating temperature			-30°C...+60°C	-30°C...+60°C	-30°C...+60°C
Rated operational voltage, U _e		V	240	415	415
Rated insulation voltage	Pollution degree 3	V	690	690	690
Rated thermal current and rated operational current	Ambient 40°C	A	20	20	20
Rated operational current, AC-21A and AC-22A	240V	A	20	20	20
	up to 415V	A		20	20
Rated operational current, AC-23A	230V	A/kW	9.8/2.6	9.8/2.6	9.8/2.6
	up to 400V	A/kW		15.2/7.5	15.2/7.5
Rated operational current and power, AC-3A	230V	A/kW	8.4/2.2	8.4/2.2	8.4/2.2
	up to 400V	A/kW		11.3/5.5	11.3/5.5
Rated operational short circuit current, I _p (rms), with fuses		kA	1	1	1
Maximum back-up fuse link		A	20	20	20
Cu-wire size suitable for terminal		mm ²	0.5-4	0.5-4	0.5-4
Cable for compression glands, min-max diameter		mm	7-12	7-12	7-12

ABB Oy

Protection and Connection

P.O. Box 622

FI-65101 Vaasa, Finland

Phone: +358 10 22 11

www.abb.com

Find the address of your local sales organization on the ABB homepage:

www.abb.com/contacts

> Low Voltage Products and Systems

